

## Key Investor Information

This document provides you with key investor information about this fund. It is not marketing material. The information is required by law to help you understand the nature and the risks of investing in this fund. You are advised to read it so you can make an informed decision about whether to invest.

### Ruffer UK Mid and Smaller Companies Fund (the "Sub-Fund")

a sub-fund of Ruffer SICAV (the "Fund")

**Class C – GBP Capitalisation** (the "Class") - ISIN: LU0788036498

The Fund has appointed FundPartner Solutions (Europe) S.A. as management company.

## Objectives and investment policy

The investment objective of the Sub-Fund is to achieve positive returns from an actively managed portfolio mainly of equities and equity-related securities of companies admitted to or dealt on a financial market in the United Kingdom and with market capitalisations below the level which would warrant inclusion in the FTSE 100 Index ("UK Mid and Small Cap Companies").

Investors should note that there can be no assurance that the investment objective will be achieved.

The Sub-Fund is not a tracker fund and is actively managed. The Sub-Fund is managed in reference to a benchmark as its performance is measured against the FTSE All-Share Index Total Return.

In order to achieve its objective, the Sub-Fund will mainly invest

- directly in the equities and equity-related securities of UK Mid and Small Cap Companies and/or
- in undertakings for collective investment including other sub-funds of the Fund, up to a limit of 10% of the Sub-Fund's net assets and/or
- in any transferable securities (such as structured products) linked or offering an exposure to the performance of the above-mentioned securities.

Derivatives may be used for investment purposes and to manage the risk profile of the Sub-Fund.

On an ancillary basis, the Sub-Fund may have an exposure to the following asset classes: cash, debt securities of any type (including government and corporate debt), money market instruments and any other equities and equity related securities.

Derivatives are used for investment purposes and to manage the risk profile of the Sub-Fund.

Investors may redeem shares weekly. A redemption order is executed at the redemption price ruling on a Valuation Day (a full business day on which banks are fully open in Luxembourg), the application for the redemption of shares must reach the Administration Agent (FundPartner Solutions (Europe) S.A.) before 3:00 pm (Luxembourg time) on the Business Day preceding the relevant Valuation Day.

This Class accumulates income. Dividend distributions are not planned.

The currency of the Class is GBP.

The Sub-Fund may be suitable for investors who are looking to set aside their capital for at least 5 years.

## Risk and reward profile



- This current risk profile is based on historical data and may not be a reliable indication of the future risk profile of the Sub-Fund.
- The risk category shown is not guaranteed and may shift over time.
- The lowest category, which corresponds to Number 1, cannot be regarded as being risk-free.
- The Sub-Fund does not provide any capital guarantee or asset protection measures.

The Sub-Fund invests in equities, which may be more volatile than other asset classes such as cash or bonds. In addition, investors should note that the Sub-Fund will be mainly invested in companies of small and medium capitalisation, which tend to be more risky than larger, more established companies; they may be less able to weather economic shifts or other adverse developments than such larger companies. Therefore, the long term risk/reward indicator corresponds to a medium high risk class on the SRRR (Synthetic Risk and Reward Indicator) risk scale.

- **Liquidity risks:** The Sub-Fund invests part of its assets in less liquid securities. Those are securities that cannot easily be sold or exchanged for cash without a substantial loss in value. Those securities also cannot be sold quickly because of a lack of ready and willing investors or speculators to purchase the asset. This can increase the risk of suspension of unit redemptions.

- **Counterparty risks:** The Sub-Fund can conclude various transactions with contractual partners. If a contractual partner becomes insolvent, it can no longer or can only partly settle unpaid debts owed to the Sub-Fund.

- **Credit risks:** The Sub-Fund invests a significant portion of its assets in debt securities. Debt securities are subject to the risk of an issuer's inability to meet principal and interest payments on the obligation (credit risk) and may also be subject to price volatility due to such factors as interest rate sensitivity, market perception of the creditworthiness of the issuer and general market liquidity (market risk).

- **Risks from the use of derivatives:** The Sub-Fund may invest in derivatives. A relatively small movement in the value of the derivative's underlying investment may have a much larger impact, positive or negative, on the value of the sub-fund than if the Sub-Fund were to hold the underlying investment itself. Derivatives are also used to reduce risk by hedging against movement in the value of investments held in the Sub-Fund.

- **Operational risks:** The Sub-Fund may fall victim to fraud or criminal acts. It may suffer losses as a result of misunderstandings or mistakes by employees of the Management Company or by external third parties or may be damaged by external events, such as natural disasters.

All the risks currently identified as being applicable to the Sub-Fund are set out in the Risk Factors section of the Prospectus.

## Charges

### One-off charges taken before or after you invest

Entry charge	5.00%
Exit charge	0.00%

*This is the maximum that might be taken out of your money before it is invested / before the proceeds of your investment are paid out.*

### Charges taken from the Sub-Fund over a year

Ongoing charges	1.28%
-----------------	-------

### Charges taken from the Sub-Fund under certain specific conditions:

Performance fee	There is no performance fee for this product.
-----------------	---

These percentages are maximum figures which might be charged by intermediaries, in some cases you might pay less. The actual entry and exit charges can be found out from adviser or distributor.

The charges you pay are used to pay the cost of running this Class, including the costs of marketing and distributing it. These charges reduce the potential growth of your investment.

The percentage of ongoing charges is based on the last year's expenses, ending 31/12/2023. This figure may vary from year to year. It excludes:

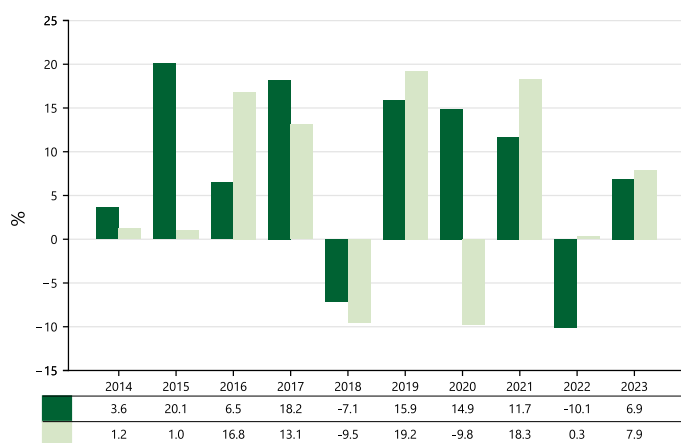
- Performance fees (if applicable)
- Portfolio transaction costs, except in the case of an entry/exit charge paid by the Sub-Fund when buying or selling units in another collective investment undertaking.

The subscription or redemption price of the Sub-Fund may be adjusted to make sure costs caused by net subscriptions or net redemptions exceeding 5.0% of the net asset value of the Sub-Fund are borne by investors responsible for those flows. The adjustment shall not exceed 1.0% of the net asset value per share and shall be identical for all subscriptions/redemptions effected on such day.

For more information about charges, please refer to the section of the Fund's Prospectus which details the expenses.

## Past performance

- Class C – GBP Capitalisation (LU0788036498)
- FTSE All-Share Index Total Return GBP



Please be aware that past performance is not a reliable indicator of future results.

The past performance shown is net of taxes, costs and charges.

The Sub-Fund and this Class were launched on 25 June 2012.

Past Performance of the Class has been calculated in GBP.

## Practical information

**Registered Office:** 15 Avenue J.-F. Kennedy L-1855 Luxembourg  
Phone number: +352 467171-1, Fax number: +352 467171-7667

**Transfer Agent and Management Company:** FundPartner Solutions (Europe) S.A., 15 Avenue J.F. Kennedy L-1855 Luxembourg

**Depository:** Bank Pictet & Cie (Europe) AG, succursale de Luxembourg, 15A Avenue J.F. Kennedy, L-1855 Luxembourg

More detailed information on the Fund, such as the Prospectus, the Key Investor Information, the statutes as well as the latest annual and semi annual report, can be obtained free of charge from the central administrator, the distributors, the Management Company or online at [www.fundsquare.net](http://www.fundsquare.net) or at [www.ruffer.co.uk](http://www.ruffer.co.uk).

Details of the remuneration policy established by the Management Company, including a description of how remuneration and benefits are calculated, are available on the link <https://assetservices.group.pictet/asset-services/fund-library/>. A paper copy of the summarized remuneration policy is available free of charge to the shareholders of the Sub-Fund upon request.

The net asset value per share is available on [www.fundsquare.net](http://www.fundsquare.net) or at [www.ruffer.co.uk](http://www.ruffer.co.uk), at the registered office of the Fund and from the Management Company

Prospective investors should inform themselves and take appropriate advice as to the tax consequences within the countries of their residence and domicile for the purchase, holding or sales of shares in the Fund. The Luxembourg tax legislation may have an impact on the personal taxation of the investor.

FundPartner Solutions (Europe) S.A. may be held liable solely on the basis of any statement contained in this document that is misleading, inaccurate or inconsistent with the relevant parts of the prospectus for the Fund.

Shareholders may apply for any shares of any Sub-Fund to be converted into shares of another Sub-Fund, provided that the conditions for accessing the target share class, type or sub-type are fulfilled with respect to this Sub-Fund into which they are switching, on the basis of their respective net asset values calculated on the Valuation Day following receipt of the conversion request. The redemption and subscription costs connected with the conversion may be charged to the shareholder as indicated in the Prospectus. For more details about how to switch between sub-funds, please refer to the section which details the conversion of shares of the Prospectus, which is available at [www.ruffer.co.uk](http://www.ruffer.co.uk).

This Key Investor Information document describes one Class of a Sub-Fund of the Fund. Other Classes are available for this Sub-Fund. For more information about other Classes please refer to the Prospectus and periodic reports that are prepared for the entire Fund.

The Fund is comprised of several sub-funds, which are segregated by law and correspond to a distinct part of the assets and liabilities of the Fund. Rights of investors and creditors concerning a Sub-Fund or arising in connection with the creation, operation or liquidation of a Sub-Fund are limited to the assets of that Sub-Fund.